



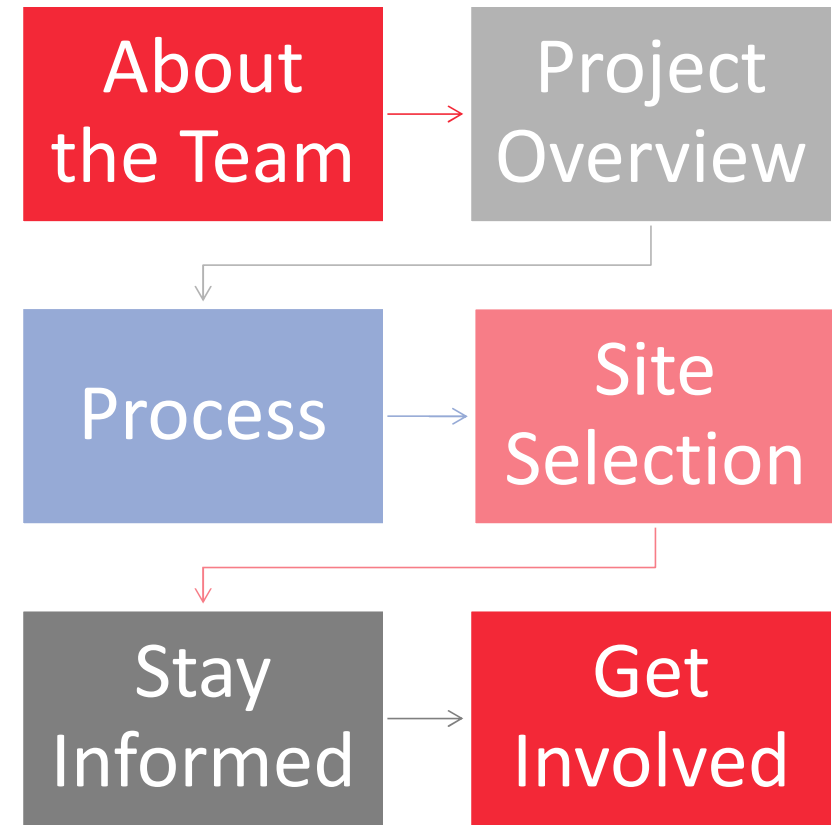
STORMWATER MANAGEMENT AND GREEN INFRASTRUCTURE DESIGN PROJECT

Four Sub Watersheds: Hickey Run, Nash Run, Fort Dupont, Pope Branch

Presenter: Jo-Elle Burgard



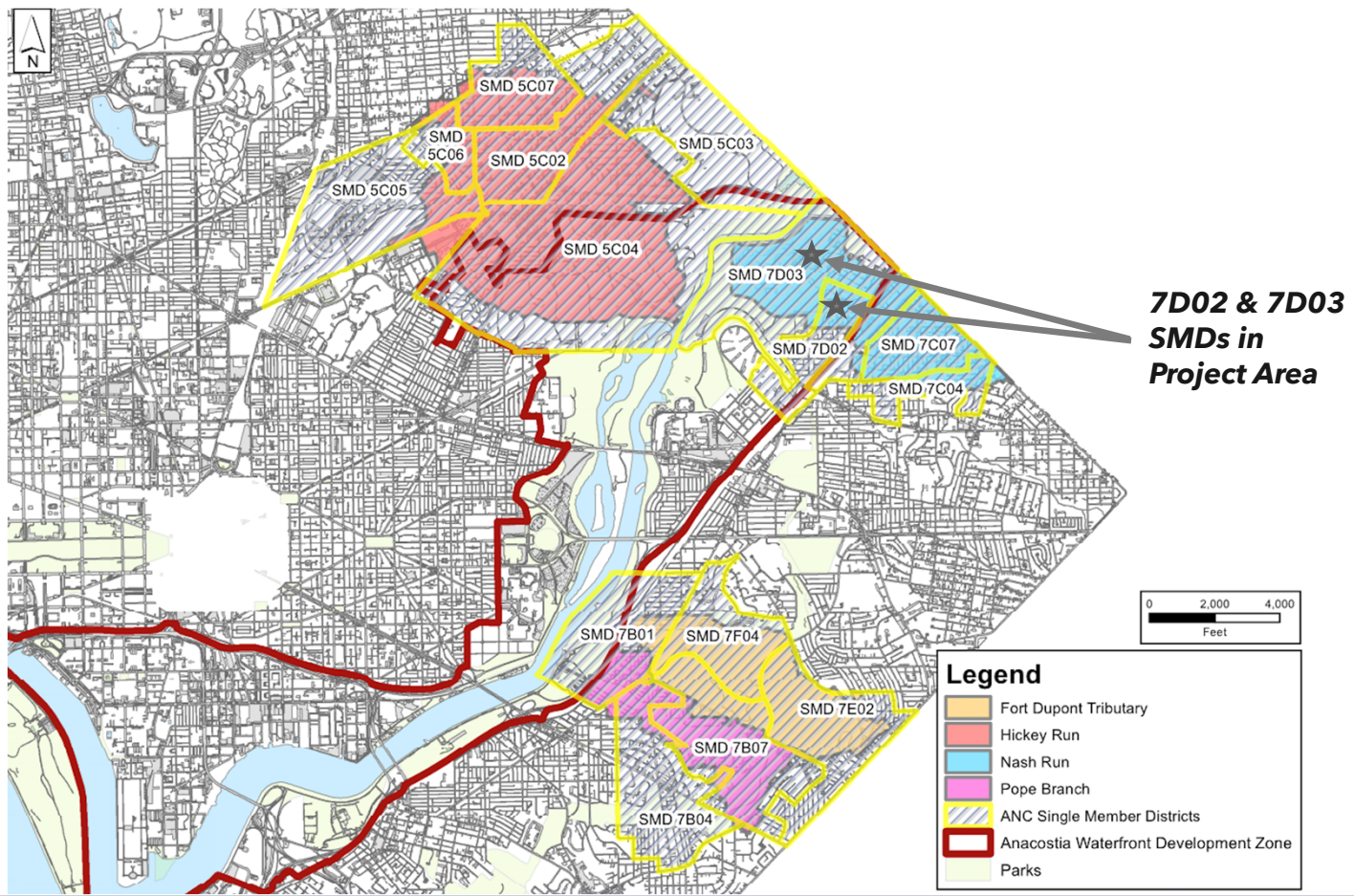
AGENDA



DDOT Project Team



PROJECT AREA



THE CHALLENGE

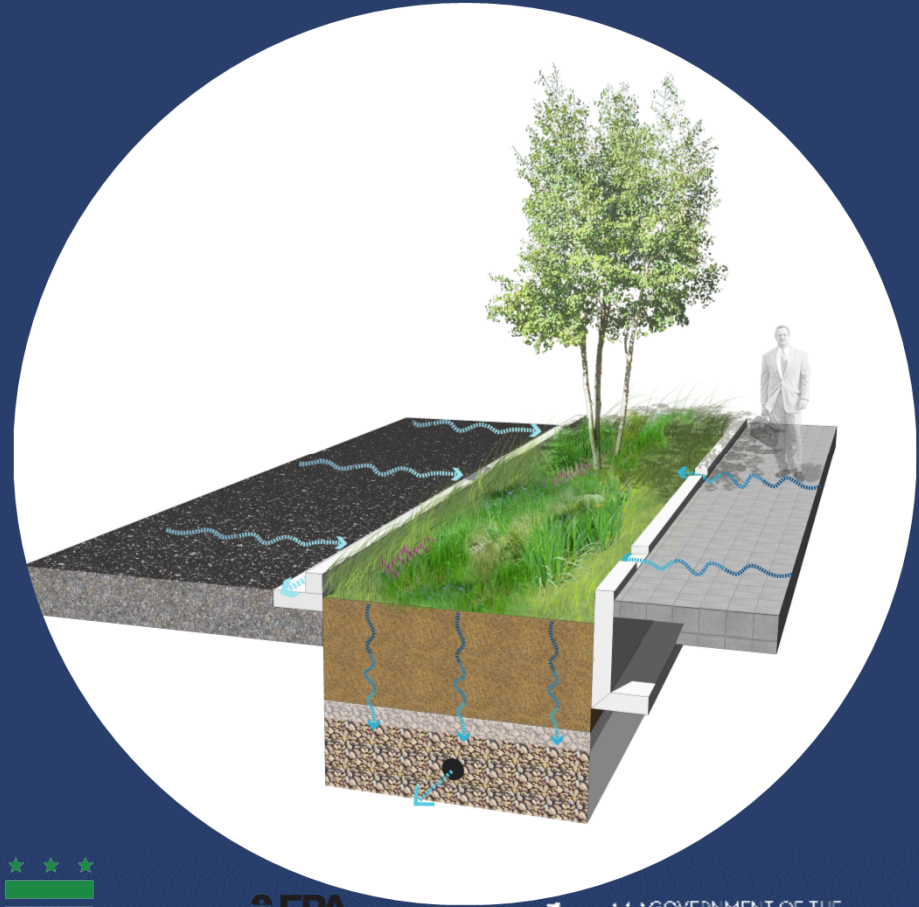
- The overall goals of this project are to improve water quality and help reduce water quantity impacts to the Anacostia River from stormwater.
- DOEE developed a list of targeted subwatersheds that have the biggest water quality impacts to Anacostia
 - *The Hickey Run, Nash Run, Pope Branch, and Fort Dupont are the 4 watersheds selected for the project*





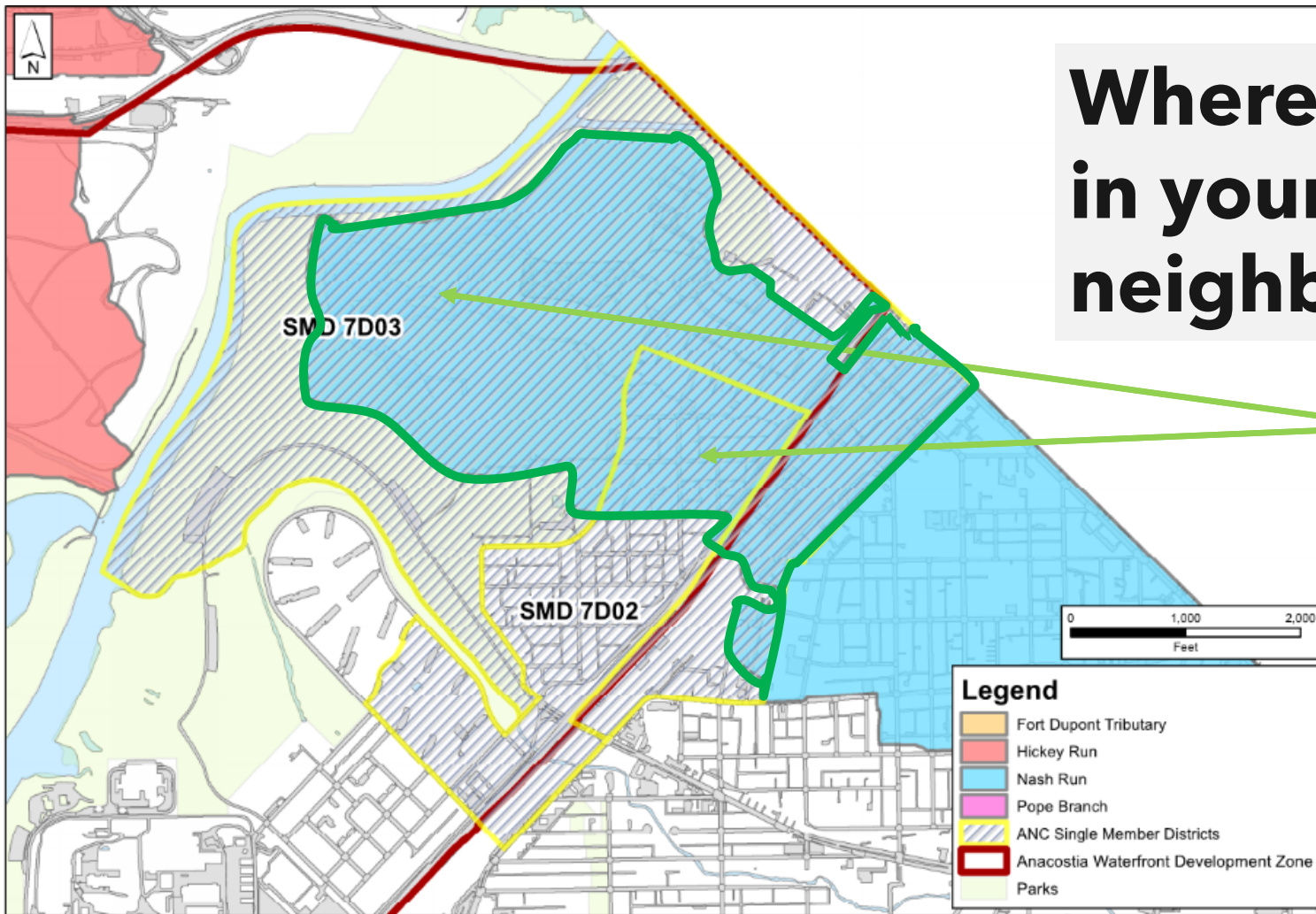
THE SOLUTION

- Green Infrastructure - Stormwater management approach that mimics the natural water cycle to absorb and treat rainwater incorporating landscaping features and green spaces
 - Plants, trees, permeable pavement
- Project will capture rainwater from 360,000 square feet of impervious surfaces such as roadways



What's Happening In Your Neighborhood?





**Where are we
in your
neighborhood?**

*We're
focusing on
the areas
outlined in
green*

How Does This Benefit You?



**USE AS TRAFFIC CALMING TO
REDUCE ROADWAY HAZARDS
FOR PEDESTRIANS, CYCLISTS,
AND MOTORISTS**

*MAKES OUR NEIGHBORHOODS
SAFER BY REDUCING MOTORIST
SPEEDS AND ACCIDENTS*



**NEIGHBORHOOD
BEAUTIFICATION**

*PLANTS AND TREES CAPTURE
AND ABSORB STORMWATER TO
HELP REDUCE UNSAFE
CONDITIONS LIKE FREEZING IN
WINTER AND LOCALIZED
FLOODING IN SUMMER*



CONSERVE ENERGY

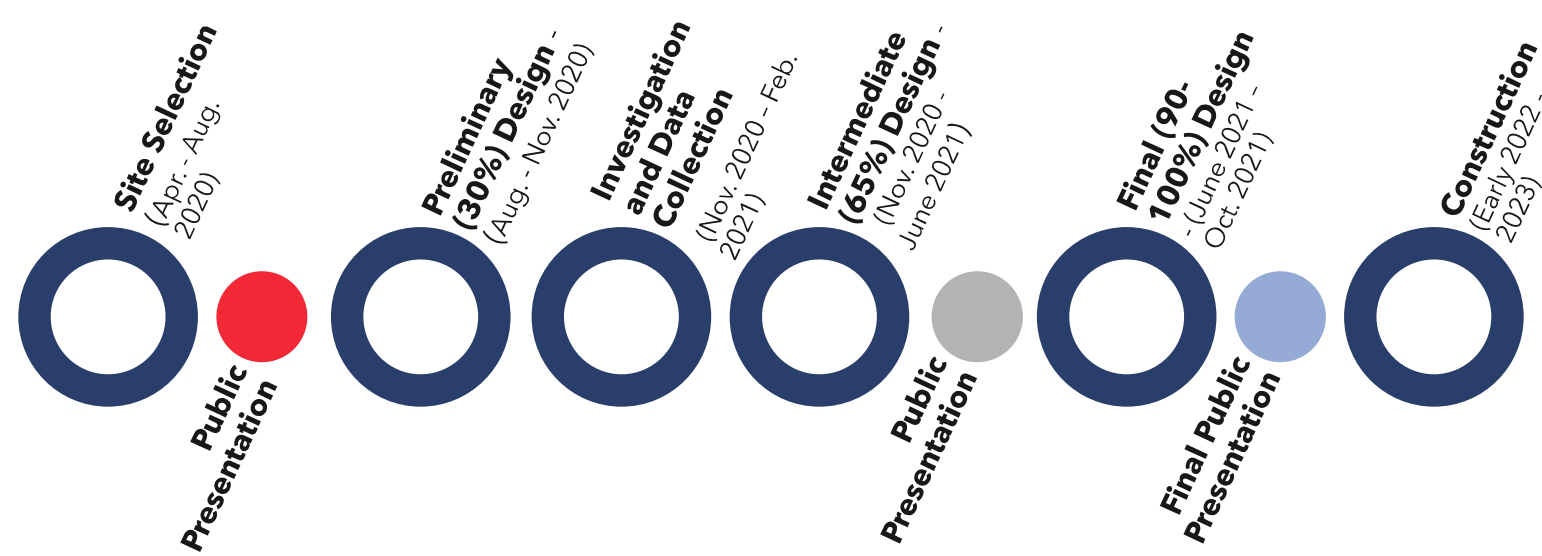
*TREES HELP WITH HEAT ISLAND
EFFECT, WHICH HELPS REDUCE
ROADWAY AND OUTDOOR
TEMPERATURES*



ENHANCES STREAMS AND RIVERS

*REDUCES POLLUTION AND EROSION
IN THE ANACOSTIA RIVER
CONNECTS AND IMPROVES
WILDLIFE HABITAT*

DESIGN PROCESS



SITE SELECTION

Phase I Impervious Area Availability

- Rank sites based on how much rainwater is collected

Phase II Site Availability

- Rank sites based on usable space with lesser impacts to residents

Phase III Site Suitability

- Rank sites based on utility conflicts and other factors that make a site unsuitable

Avoidances

- Busy streets, parking and congested areas, existing trees, utility conflicts or interruptions, recent upgrades



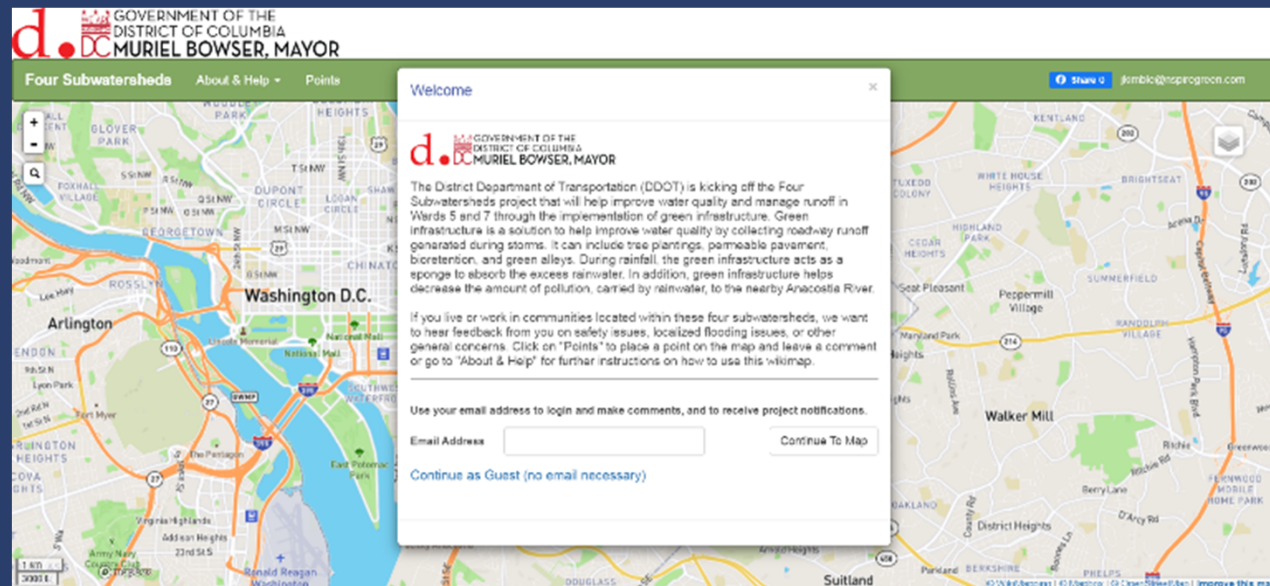
NEXT STEPS

COLLECT YOUR FEEDBACK

DEVELOP PRELIMINARY
DESIGN

COLLECT MORE
FEEDBACK!

We Need Your Feedback!



VISIT [HTTPS://WIKIMAPPING.COM/FOUR-SUBWATERSHEDS.HTML](https://wikimapping.com/four-subwatersheds.html) TO GIVE YOUR FEEDBACK





STAY INFORMED



EMAIL JO-ELLE BURGARD AT
JOELLE.BURGARD@DC.GOV
GREEN INFRASTRUCTURE TEAM



WEBSITE
WWW.FOURSUBWATERSHEDS.COM



District Department of Transportation

